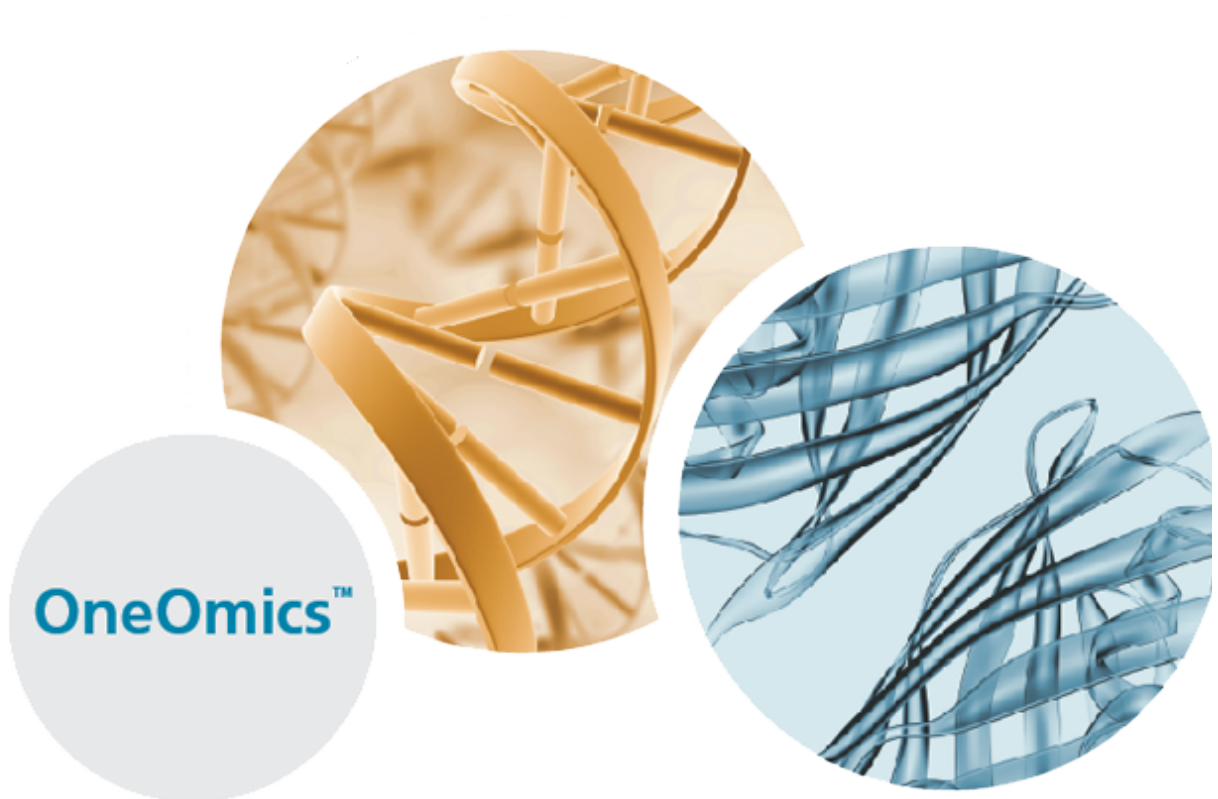




CloudConnect AutoUploader 1.0

Release Notes



This document is provided to customers who have purchased SCIEX equipment to use in the operation of such SCIEX equipment. This document is copyright protected and any reproduction of this document or any part of this document is strictly prohibited, except as SCIEX may authorize in writing.

Software that may be described in this document is furnished under a license agreement. It is against the law to copy, modify, or distribute the software on any medium, except as specifically allowed in the license agreement. Furthermore, the license agreement may prohibit the software from being disassembled, reverse engineered, or decompiled for any purpose. Warranties are as stated therein.

Portions of this document may make reference to other manufacturers and/or their products, which may contain parts whose names are registered as trademarks and/or function as trademarks of their respective owners. Any such use is intended only to designate those manufacturers' products as supplied by SCIEX for incorporation into its equipment and does not imply any right and/or license to use or permit others to use such manufacturers' and/or their product names as trademarks.

SCIEX warranties are limited to those express warranties provided at the time of sale or license of its products and are SCIEX's sole and exclusive representations, warranties, and obligations. SCIEX makes no other warranty of any kind whatsoever, expressed or implied, including without limitation, warranties of merchantability or fitness for a particular purpose, whether arising from a statute or otherwise in law or from a course of dealing or usage of trade, all of which are expressly disclaimed, and assumes no responsibility or contingent liability, including indirect or consequential damages, for any use by the purchaser or for any adverse circumstances arising therefrom.

For research use only. Not for use in diagnostic procedures.

AB Sciex is doing business as SCIEX.

The trademarks mentioned herein are the property of AB Sciex Pte. Ltd. or their respective owners.

AB SCIEX™ is being used under license.

© 2016 AB Sciex



AB Sciex Pte. Ltd.
Blk 33, #04-06
Marsiling Ind Estate Road 3
Woodlands Central Indus. Estate.
SINGAPORE 739256

Contents

Chapter 1 Introduction.....	4
System Requirements.....	4
Features.....	5
Get Help.....	6
Contact Us.....	7
Chapter 2 Install the CloudConnect AutoUploader.....	8
Chapter 3 Known Issues.....	11
Chapter 4 Troubleshooting.....	12
Revision History.....	13

Introduction

1

The CloudConnect AutoUploader utility enables users to upload a batch of samples (.wiff files) that has been saved and submitted to the Analyst[®] TF software queue. The utility monitors the saved Analyst[®] TF software batches and, as the samples are acquired, the .wiff files are uploaded. Only samples that are identified as *acquired* can be uploaded. Extra samples that are inserted by the Analyst[®] TF software to perform calibrations (calibration samples) are not uploaded to BaseSpace.

Users can delete individual samples from the upload queue or entire batches of samples in the queue. Samples that are in the process of being uploaded to BaseSpace continue until the upload is complete. However, no additional samples in the job are uploaded.

System Requirements

The CloudConnect AutoUploader utility requires the Analyst[®] TF software, version 1.7 or 1.7.1.

Analyst [®] TF software, version 1.7	Analyst [®] TF software, version 1.7.1
Supported Operating System	
Microsoft Windows 7 Professional (32-bit)	Microsoft Windows 7 Professional (32-bit) or (64-bit) with SP1
Supported Network Environment	
Microsoft Windows Server 2003	Microsoft Windows Server 2008 R2
Microsoft Windows Server 2008	—
.NET Framework	
Microsoft .NET Framework 4.5.1	Microsoft .NET Framework 4.5.1
Recommended Hardware: Acquisition Workstation for the TripleTOF[®] 4600, 5600, and 5600+ systems	
Dell OptiPlex 9010 Computer, with: <ul style="list-style-type: none">• Intel Core I5-3550S• 4 GB (2 × 2 GB) DDR3 1600 Mhz SDRAM	Dell OptiPlex 9010 Computer, with: <ul style="list-style-type: none">• Intel Core I5-3550S• 4 GB (2 × 2 GB) DDR3 1600 Mhz SDRAM

Analyst® TF software, version 1.7	Analyst® TF software, version 1.7.1
Dell OptiPlex XE2 Computer, with: <ul style="list-style-type: none"> • Intel Core I5-4570S processor (Quad core, 2.90 GHz, 6 MB with HD Graphics 4600) • 8 GB (2 × 4 GB) DDR3 1600 Mhz SDRAM 	Dell OptiPlex XE2 Computer, with: <ul style="list-style-type: none"> • Intel Core I5-4570S processor (Quad core, 2.90 GHz, 6 MB with HD Graphics 4600) • 8 GB (2 × 4 GB) DDR3 1600 Mhz SDRAM
Recommended Hardware: Acquisition Workstation for the TripleTOF® 6600 system	
Dell Precision T3600 Computer, with: <ul style="list-style-type: none"> • Hexa Intel Xeon E5-1660 Processor 3.30 GHz • 4 GB (2 × 2 GB) RAM • 2 × 2 Tb HDD (RAID1) • DVD ± RW • Network card – Intel Pro/1000 PT Dual port 	Dell Precision T3600 Computer, with: <ul style="list-style-type: none"> • Hexa Intel Xeon E5-1660 Processor 3.30 GHz • 4 GB (2 × 2 GB) RAM • 2 × 2 Tb HDD (RAID1) • DVD ± RW • Network card – Intel Pro/1000 PT Dual port
—	Dell Precision T5810 Computer, with: <ul style="list-style-type: none"> • Quad Intel Xeon E5-1620v3 Processor 3.50 GHz • 8 GB RAM • 2 × 2 Tb HDD (RAID1) • DVD ± RW • Network cards – two Intel I210 T1, Intel Pro/1000 PT Dual port (optional)

Features

The initial release, version 1.0, provides the following features:

- Monitors the Analyst® TF software saved batch files, and uploads the .wiff files to BaseSpace, as the samples are acquired.
- Enables the user to search for and then select the files to be uploaded. Non-selected .wiff files are not uploaded.
- Provides the status of the Analyst® TF software queue.

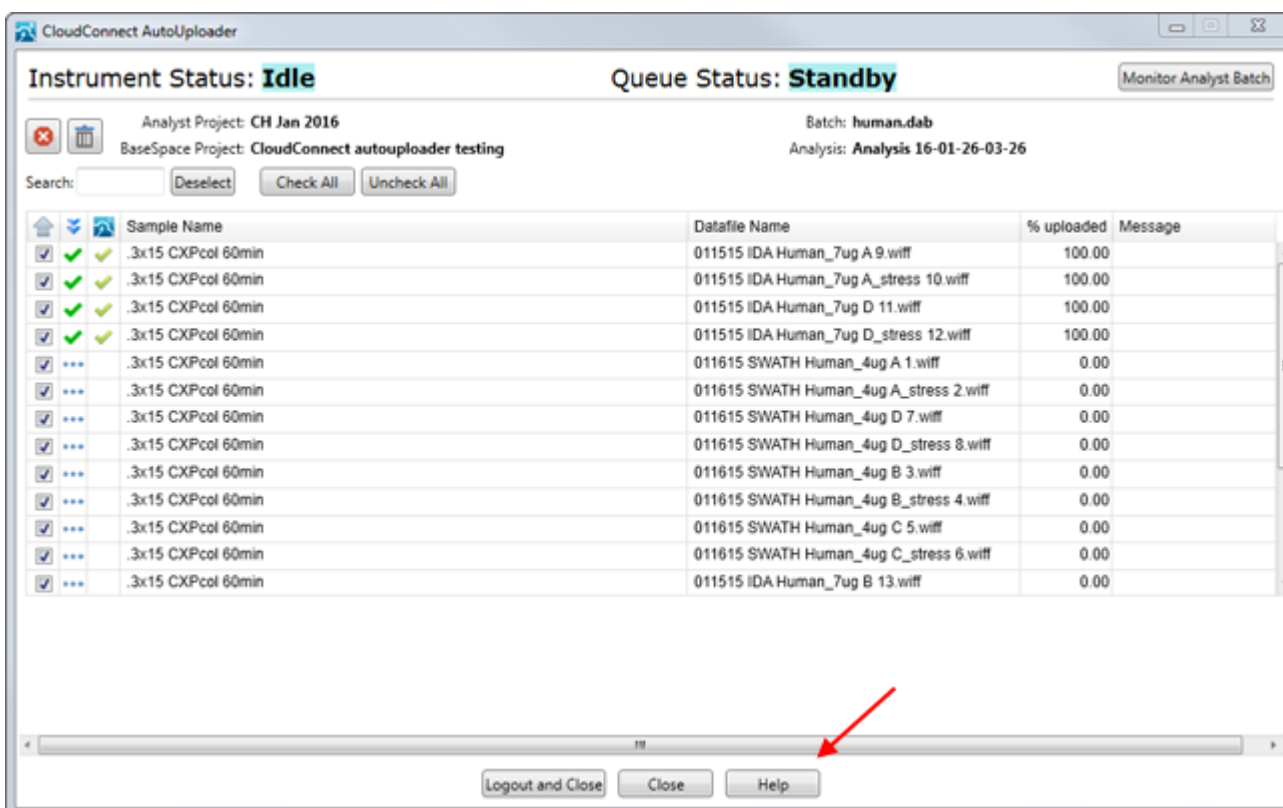
Get Help

The *User Guide* is part of the SCIEX CloudConnect AutoUploader installation.

To access the *User Guide*, do one of the following:

- Navigate to C:\Program Files (x86)\AB SCIEX\AutoUploader and then click **CloudConnect-AutoUploader-User-Guide.pdf**.
- On the CloudConnect AutoUploader dialog, click **Help**.

Figure 1-1 CloudConnect AutoUploader Dialog



Contact Us

SCIEX Support

- sciex.com/contact-us
- sciex.com/request-support

Customer Training

- In North America: NA.CustomerTraining@sciex.com
- In Europe: Europe.CustomerTraining@sciex.com
- Outside the EU and North America, visit sciex.com/education for contact information.

Online Learning Center

- training.sciex.com

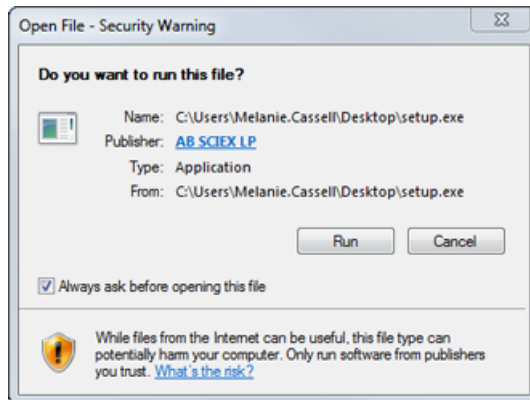
Install the CloudConnect AutoUploader

2

1. Go to the sciex.com/support/software-downloads page and then select the **CloudConnect AutoUploader 1.0 Software** from the Other Software Downloads list.
2. Save the software download .zip file to the computer desktop.
3. After the .zip file is downloaded, double-click the file and then extract all of the files to the computer.
4. Make sure that the Analyst[®] TF software is closed.
5. Locate and then click the **setup.exe** file.

The Open File - Security Warning dialog opens.

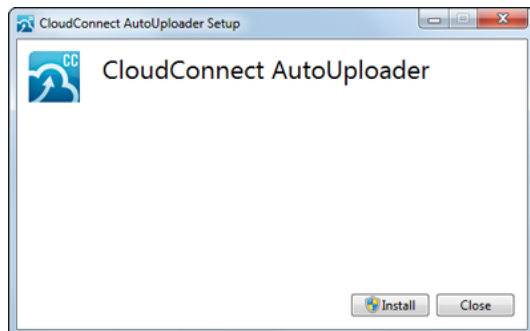
Figure 2-1 Open File - Security Warning Dialog



6. Click **Run**.

The CloudConnect AutoUploader Setup dialog opens.

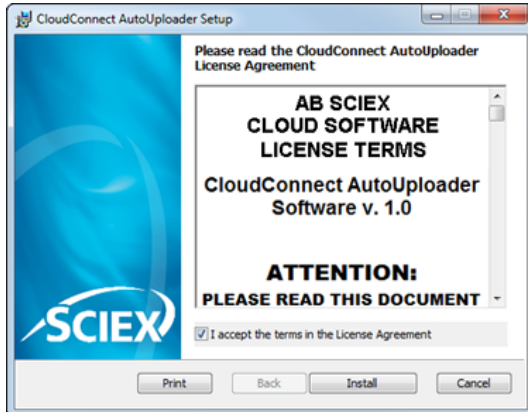
Figure 2-2 CloudConnect AutoUploader Setup Dialog



7. Click **Install**.

If the User Account Control dialog opens, then click **Yes** to allow the program to make changes to the computer. The license agreement dialog opens.

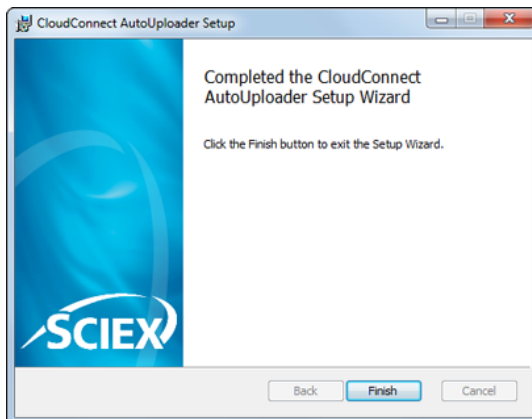
Figure 2-3 License Agreement Dialog



8. Select the **I accept the terms in the License Agreement** check box and then click **Install**.

The installation begins. When the installation is complete, the installation completed dialog opens.

Figure 2-4 Installation Complete Dialog

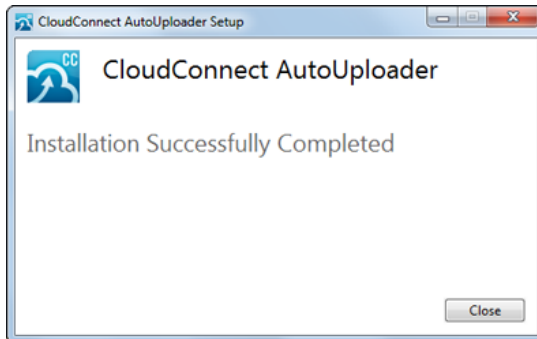


9. Click **Finish**.

The Installation Successfully Completed dialog opens.

Install the CloudConnect AutoUploader

Figure 2-5 Installation Successfully Completed Dialog



10. Click **Close**.

- To make sure that the CloudConnect AutoUploader functions as expected, make sure that the Analyst[®] TF software batch file is saved in the Analyst Project selected in the Monitor Analyst Batch dialog.
- .wiff files must contain only one sample. The CloudConnect AutoUploader cannot upload a .wiff file that contains more than one sample.

Troubleshooting

4

Symptom	Corrective Action
Files cannot be uploaded to BaseSpace.	If a batch fails to upload to BaseSpace, then the CloudConnect Micro-App can be used to upload the information.

Revision History

Revision	Reason for Change	Date
A	First release of document.	March 2016
B	Updated name of software executable.	March 2016