



License Server Setup Guide

This document is provided to customers who have purchased SCIEX equipment to use in the operation of such SCIEX equipment. This document is copyright protected and any reproduction of this document or any part of this document is strictly prohibited, except as SCIEX may authorize in writing.

Software that may be described in this document is furnished under a license agreement. It is against the law to copy, modify, or distribute the software on any medium, except as specifically allowed in the license agreement. Furthermore, the license agreement may prohibit the software from being disassembled, reverse engineered, or decompiled for any purpose. Warranties are as stated therein.

Portions of this document may make reference to other manufacturers and/or their products, which may contain parts whose names are registered as trademarks and/or function as trademarks of their respective owners. Any such use is intended only to designate those manufacturers' products as supplied by SCIEX for incorporation into its equipment and does not imply any right and/or license to use or permit others to use such manufacturers' and/or their product names as trademarks.

SCIEX warranties are limited to those express warranties provided at the time of sale or license of its products and are SCIEX's sole and exclusive representations, warranties, and obligations. SCIEX makes no other warranty of any kind whatsoever, expressed or implied, including without limitation, warranties of merchantability or fitness for a particular purpose, whether arising from a statute or otherwise in law or from a course of dealing or usage of trade, all of which are expressly disclaimed, and assumes no responsibility or contingent liability, including indirect or consequential damages, for any use by the purchaser or for any adverse circumstances arising therefrom.

Not all SCIEX instruments are approved IVDs. Consult your local sales representative or the SCIEX website for more information.

AB Sciex is doing business as SCIEX.

The trademarks mentioned herein are the property of AB Sciex Pte. Ltd. or their respective owners.

AB SCIEX™ is being used under license.

© 2017 AB Sciex



AB Sciex Pte. Ltd.
Blk 33, #04-06
Marsiling Ind Estate Road 3
Woodlands Central Indus. Estate.
SINGAPORE 739256

Contents

Chapter 1 Software License Requirements.....	4
Chapter 2 Obtain a License for the License Server.....	5
Chapter 3 Install the License Manager Administrator (ladmin) Server	6
Chapter 4 Deploy the License Server.....	8
Chapter 5 License File for Client Computers	14
Chapter 6 Licensing Rules.....	15
Chapter 7 Troubleshooting.....	16

Software License Requirements

1

This section explains the operating system and computer specification requirements that the license server computer must meet for the license server to operate.

Operating System Requirements

The license server requires Microsoft Windows 7 (32-bit or 64-bit) operating system, Windows 10 (32-bit or 64-bit) operating system, Windows Server 2008 R2, or Windows Server 2012 R2.

Minimum Physical Requirements for the License Server Computer

- Processor: 1 gigahertz (GHz) or faster
- 1 GB RAM
- 1 GB available hard disk space
- Ethernet card with TCP/IPv4 configured

Obtain a License for the License Server

2

The license for a license server is node-locked. To obtain the license, have the following information ready and then contact SCIEX Sales.

- The software name and version number for which the license is required.
- The MAC address of the network interface card that is used to connect the computer to the network.

Note: There may be more than one in a multi-homed host.

- The number of concurrent licenses to deploy.

This node-locked license file is needed when deploying the License Server.

Install the License Manager Administrator (Imadmin) Server

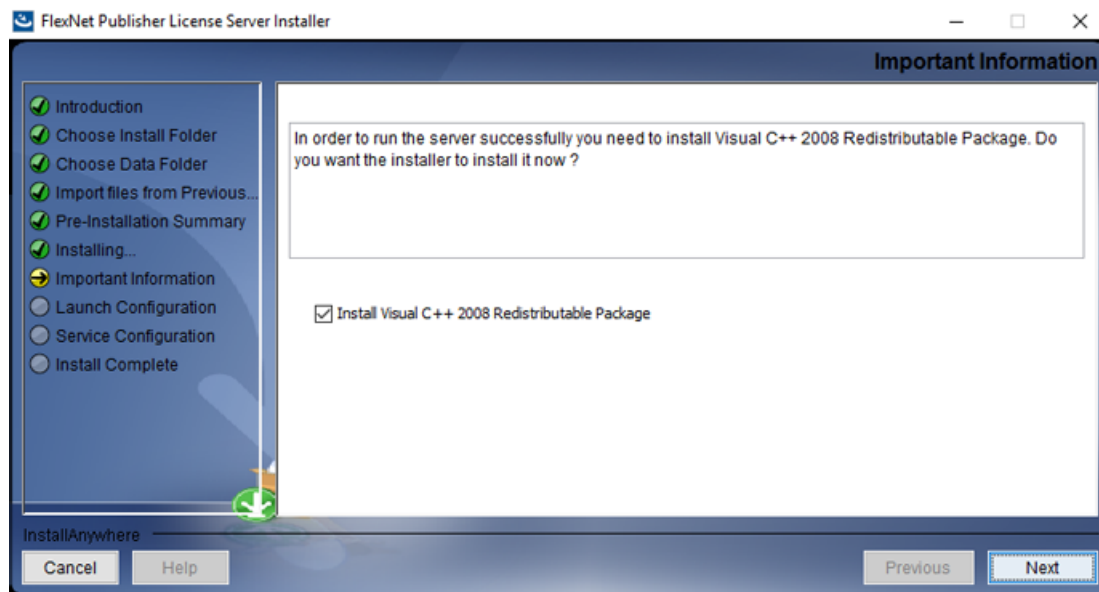
3

1. Unzip the downloaded file *License-Server-Setup.zip*.

It should contain the **FlexNet Publisher software** (*Imadmin-i86_n3-11_14_1_1.exe*), the **Sciex Vendor Daemon software** (*ScxMSSW0.exe*), and the **License Server Setup Guide** (*License-Server-Setup-Guide.pdf*).

2. On the license server computer, make sure the Java Virtual Machine is installed. To obtain the latest version of Java, visit java.com.
3. Run the *Imadmin-i86_n3-11_14_1_1.exe* from the unzipped package and then install Imadmin.
4. Click **Next**.
5. Click **Next** on all of the subsequent pages until the Important Information page is shown.
6. Click **Install Visual C++ 2008 Redistributable Package**.

Figure 3-1 Important Information Page

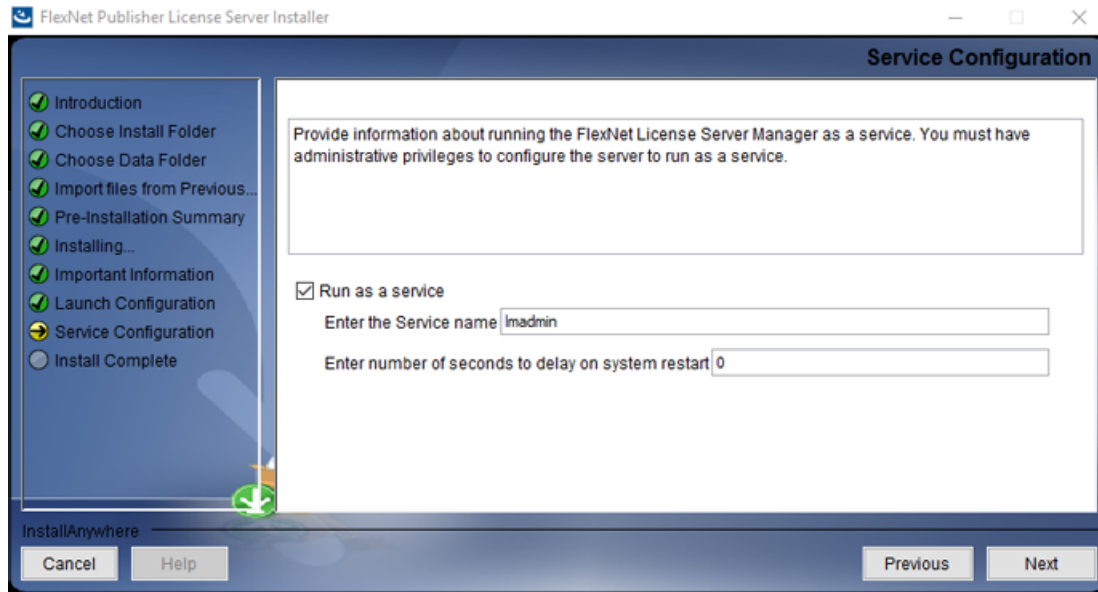


7. Click **Next**.
8. Click **Next** on all of the subsequent pages until the Service Configuration page is shown.

Install the License Manager Administrator (lmadmin) Server

9. Select the **Run as a service** checkbox.

Figure 3-2 Service Configuration Page



10. Click **Next**.
11. Click **Done**.

Deploy the License Server

4

1. Start the Imadmin Windows service.
2. Browse to <http://localhost:8090/> on the computer.
3. Click the **Administration** tab and then type the username and password.

The default username and password are admin.

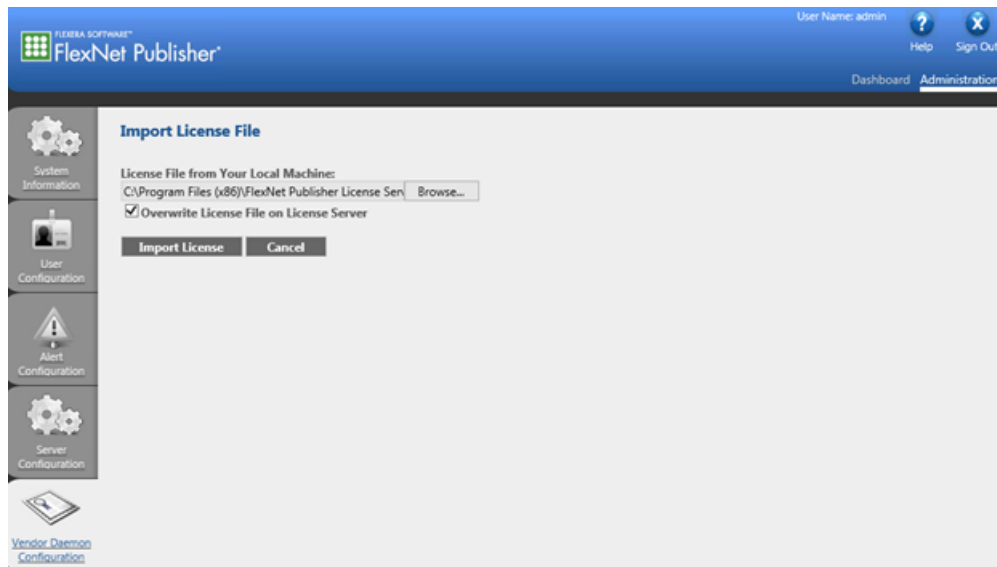
The user will be prompted to change the default password after signing in for the first time.

4. Copy the *ScxMSSW0.exe* from the unzipped package and then paste it directly in the C:\Program Files (x86)\FlexNet Publisher License Server Manager folder on a Microsoft Windows 64-bit system or in the C:\Program Files\FlexNet Publisher License Server Manager folder on a Microsoft Windows 32-bit system.
5. Put the license file (obtained in [Obtain a License for the License Server](#)) that is node-locked to the ethernet MAC address of the licensing server in the C:\Program Files (x86)\FlexNet Publisher License Server Manager\licenses\ScxMSSW0 folder on a Microsoft Windows 64-bit system or in the C:\Program Files\FlexNet Publisher License Server Manager\licenses\ScxMSSW0 folder on a Microsoft Windows 32-bit system.

Note: Create the licenses\ScxMSSW0 directory structure if it does not already exist in the C:\Program Files (x86)\FlexNet Publisher License Server Manager folder on a Microsoft Windows 64-bit system or in the C:\Program Files\FlexNet Publisher License Server Manager folder on a Microsoft Windows 32-bit system. This is done to store the license file.

6. Browse to <http://localhost:8090/vendor>.
7. Click **Import License** in Vendor Daemon Configuration.
8. Browse to the folder in step 5, select the license file, and then click **Open**.
9. Select the **Overwrite License File on License Server** checkbox and then click **Import License**.

Figure 4-1 Import License File



Note: The license must be imported for server-based licensing to work.

If the import is successful, then a message is shown to indicate that the license file is uploaded successfully. Close the message. The FlexNet publisher window shows that the Vendor Daemons is running with the status Up.

Deploy the License Server

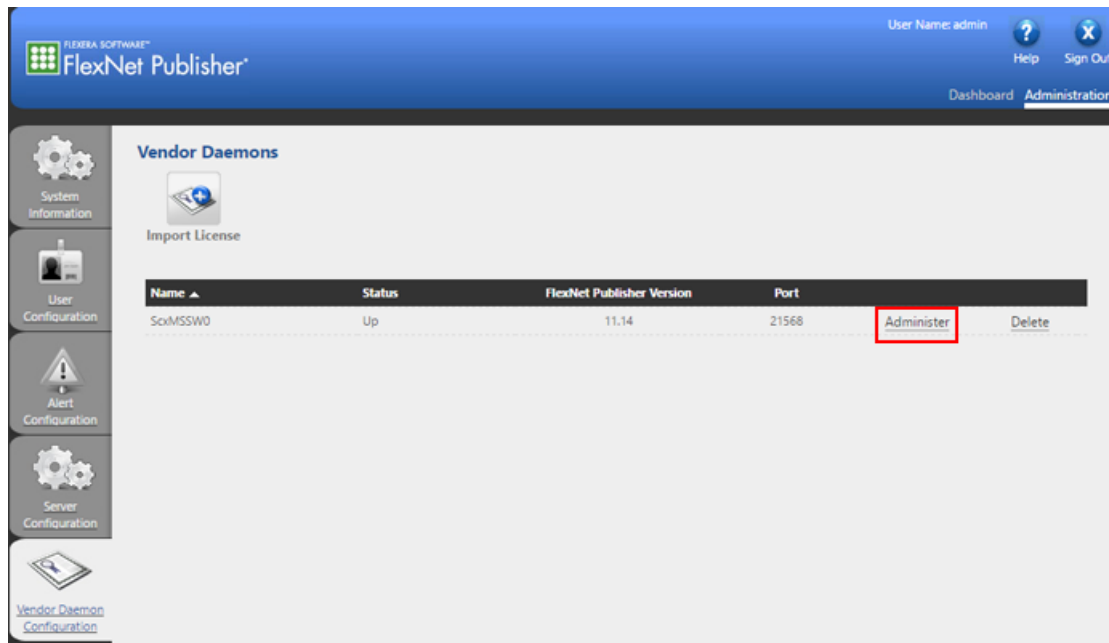
Figure 4-2 Vendor Daemons

The screenshot shows the FlexNet Publisher Administration interface. The top navigation bar includes the FlexNet Publisher logo, the user name 'admin', and links for Help and Sign Out. The main content area is titled 'Vendor Daemons' and features an 'Import License' button. Below this is a table with the following data:

Name	Status	FlexNet Publisher Version	Port	Administer	Delete
SoxMSSW0	Up	11.14	21568		

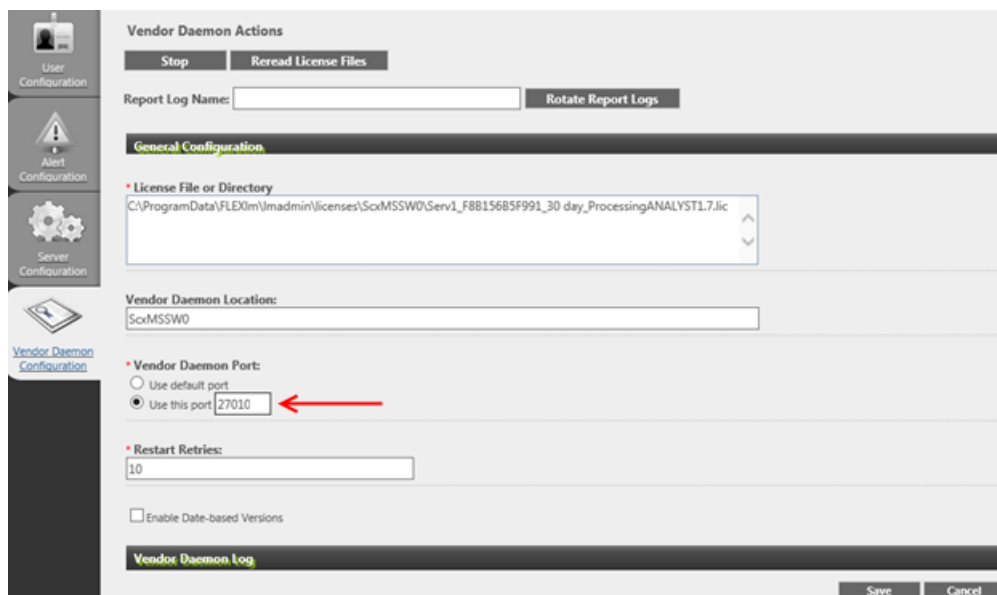
10. Click **Administer**.

Figure 4-3 Select Administer



11. Type **27010** in the **Use this port** field to configure the **Vendor Daemon:ScxMSSW0** to use the port **27010**.

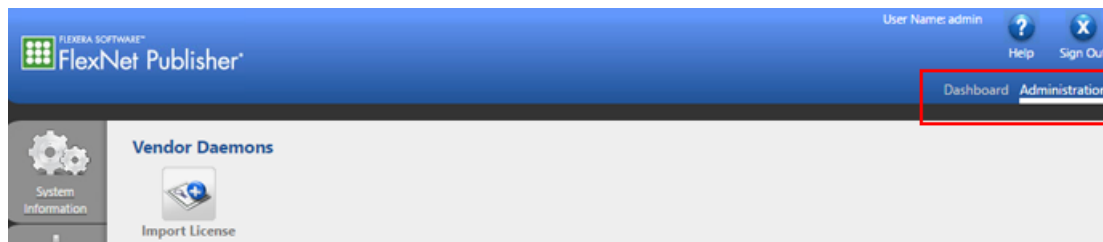
Figure 4-4 Configure Vendor Daemon Port



Deploy the License Server

12. Click **Save** at the bottom of the page.
13. Click **Stop** to stop the Vendor Daemon Actions.
14. Click **Administer** again.
15. Click **Start** to start the Vendor Daemon Actions.
16. Switch tabs to **Dashboard** and then back to the **Administration** tab.

Figure 4-5 Dashboard and Administration Tabs



The status for Vendor Daemons shows as Up.

17. In the Windows Firewall with Advanced Security pane, add two new Windows Firewall rules, one Inbound Rule and one Outbound Rule, to allow both inbound and outbound TCP connections to and from the server on the following ports:
 - 8090 (for remote access to the FlexNet Publisher Administration)
 - 27000 (for FlexNet Publisher server)
 - 27010 (for Vendor Daemon)

Figure 4-6 Inbound Rule

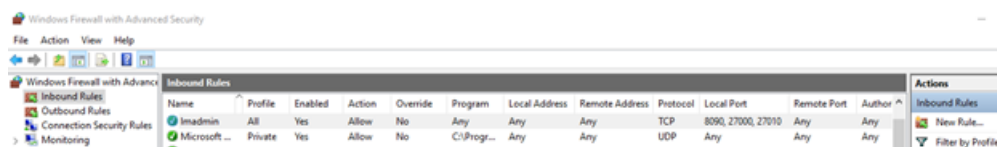
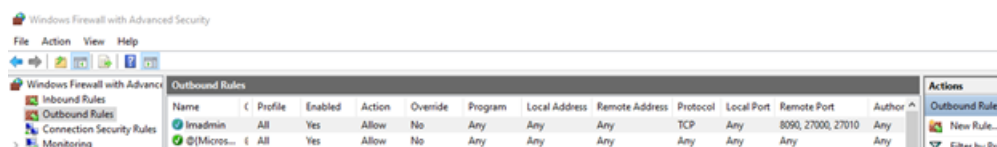


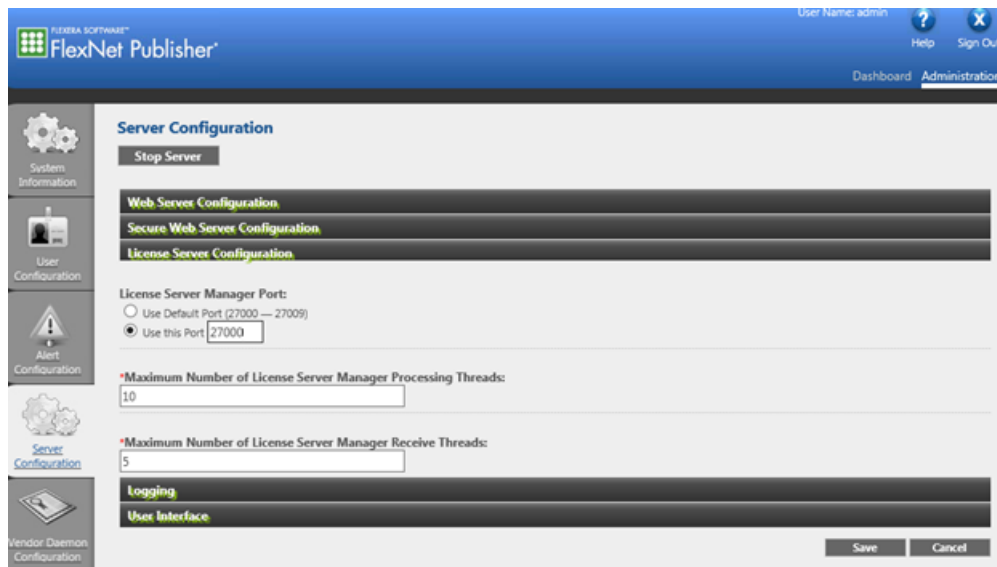
Figure 4-7 Outbound Rule



If a different port in the range of 27000 to 27009 for FlexNet Publisher server is used, then adjust the Windows Firewall settings to allow this communication if required.

18. On the server, browse to <http://localhost:8090/>.
19. Browse to the Server Configuration tab, expand the **License Server Configuration** section, select **Use this port** and then type **27000**. Click **Save**

Figure 4-8 Check Port Used by Imadmin



20. In Task Manager, stop the FlexNet Publisher Manager (Imadmin) service and then start it again.

Note: If the default range 27000 to 27009 is used, then verify which port the Imadmin is running on by opening the System Information tab.

License File for Client Computers

5

Note: The client computers on which the licensed SCIEX software are to be run must be on the network where the server is accessible by the client computers.

Create and Setup a License File

A USE_SERVER license file is a special type of license file that contains a special keyword, USE_SERVER. The license file can be created in a text editor and then saved as an lic file with All Files file type selected.

The SERVER line must always be:

```
SERVER [IP or HOSTNAME] ANY [PORT]
```

The last line must be:

```
USE_SERVER.
```

We recommend using the server name instead of the TCP/IP address of the license server. The server name (HOSTNAME) should be the full computer name including the domain such as ServerComputerName.Domain.Net.

Create and save a USE_SERVER license file and then distribute it to each client.

Note: A specific license file name might be required for each software version that the license is for. Refer to the *Installation Guide* for that software and then save the license file as *<the required license file name>.lic*.

Some example USE SERVER licenses are shown in [Table 5-1](#). Copy these examples in a text editor and then replace the applicable information with the one for the server to create a new license file.

Table 5-1 USE_SERVER License Examples

	Examples
Example 1	SERVER CO.SERV.NET ANY 27000 USE_SERVER
Example 2	SERVER 168.254.0.80 ANY 27000 USE_SERVER

- On the license server, if a previously imported license is imported again, then make sure that the **Overwrite License file on License Server** option is selected before importing the license.
- If a different license file for the same software application is imported, then select the old license file path for the same application in the License File or Directory field and then press Delete on the keyboard. Click Save, stop Vendor Daemon, and then start Vendor Daemon again.
- After the maximum licensed number has been reached, no more new users can log in to the software application unless some client computers log off from the software application.
- Users are allowed to borrow a license from their software application to work offline for up to seven days. When a license is borrowed, the available number of license will be less by one on the license server until the user returns the borrowed license or after seven days, whichever is sooner.
- A license can only be returned when the client is able to access the server.
- A user can only borrow a license when the user is logged on to the software application and the license will not expire within seven days.

- If Vendor Daemon is deleted in the Vendor Daemon Configuration tab in the FlexNet Publisher, then make sure to reset the Vendor Daemon Port to use 27010 instead of using the default port after importing the license file. Save and then start Vendor Daemon.
- Due to unknown reasons, a borrowed license might not be fully returned or cannot be returned to the license server before 7 days have elapsed. Restarting the client computer might help with the situation but it is not guaranteed.
- To restart the license server, restart the computer or restart the lmadm service in the Services tab in the Task Manager of the system.
- For any other issues, contact sciex.com/request-support.