



Release Notes

BioPhase Software

This document is provided to customers who have purchased SCIEX equipment to use in the operation of such SCIEX equipment. This document is copyright protected and any reproduction of this document or any part of this document is strictly prohibited, except as SCIEX may authorize in writing.

Software that may be described in this document is furnished under a license agreement. It is against the law to copy, modify, or distribute the software on any medium, except as specifically allowed in the license agreement. Furthermore, the license agreement may prohibit the software from being disassembled, reverse engineered, or decompiled for any purpose. Warranties are as stated therein.

Portions of this document may make reference to other manufacturers and/or their products, which may contain parts whose names are registered as trademarks and/or function as trademarks of their respective owners. Any such use is intended only to designate such products as those manufacturers' products and does not imply any right and/or license to use or permit others to use such manufacturers' and/or their product names as trademarks.

SCIEX warranties are limited to those express warranties provided at the time of sale or license of its products and are the sole and exclusive representations, warranties, and obligations of SCIEX. SCIEX makes no other warranty of any kind whatsoever, expressed or implied, including without limitation, warranties of merchantability or fitness for a particular purpose, whether arising from a statute or otherwise in law or from a course of dealing or usage of trade, all of which are expressly disclaimed, and assumes no responsibility or contingent liability, including indirect or consequential damages, for any use by the purchaser or for any adverse circumstances arising therefrom.

(GEN-IDV-09-10816-E)

For Research Use Only. Not for use in Diagnostic Procedures.

Trademarks and/or registered trademarks mentioned herein, including associated logos, are the property of AB Sciex Pte. Ltd., or their respective owners, in the United States and/or certain other countries (see sciex.com/trademarks).

AB Sciex™ is being used under license.

© 2025 DH Tech. Dev. Pte. Ltd.



Contents

1 Introduction.....	5
New Features in Version 1.5 of the Software for the BioPhase 8800 System.....	5
New Features in Version 1.5.....	5
Corrected Issues in Version 1.5.....	6
BioPhase Firmware 1.5.....	7
2 Requirements.....	8
Operating System Requirements.....	8
Computer Requirements.....	8
Local Computer Configuration Requirements.....	8
Network Configuration Requirements.....	9
Compatible Software and Firmware.....	9
Additional Software.....	10
3 Installation Instructions.....	11
Download Required Software and Files.....	11
Create Project Folders.....	11
Install the BioPhase Software.....	12
Electronic Licensing.....	13
Activate a Node-Locked License.....	13
Install the Project Management Software.....	15
4 Configure the System.....	17
Configure the Domain Isolator.....	17
Configure the IP Address.....	17
Configure the Power Options.....	20
Configure the BioPhase 8800 System IP Address.....	21
Configure the Project Management Software.....	21
Local Configuration: Create a User.....	23
Network Configuration: Connect to the Active Directory Domain.....	24
Import the BioPhase 8800 System Project Files.....	26
Configure User Access to the Project Files.....	26
5 Known Issues in the Software.....	28
Contact Us.....	33

Contents

Addresses	33
Customer Training	33
Online Learning Center	33
Buy Supplies and Reagents	33
SCIEX Support	33
Cybersecurity	34
Documentation	34

This guide supplies information about, and procedures for, the software for the BioPhase 8800 system.

Procedures for the tasks that follow are supplied:

- How to install and configure the BioPhase software
- How to download the method and sequence files
- How to install and configure the Project Management software
- How to get and install a license for the BioPhase software

Note: The numbers in parentheses are reference numbers for each issue or feature in the SCIEX internal tracking system.

New Features in Version 1.5 of the Software for the BioPhase 8800 System

This section gives a description of the enhancements and corrections in the BioPhase software, and the changes to the BioPhase Analysis software, Project Management software, and BioPhase Log File Extractor software. To see the enhancements and corrections for an earlier release, refer to the document: *Software Release Notes* for that version of the software.

New Features in Version 1.5

This version of the software includes the features and commands required to use native fluorescence detection (NFD) during data acquisition and analysis with the BioPhase 8800 system. Refer to the documents: *BioPhase 8800 System Operator Guide* or *BioPhase Software Help*.

Front Panel

- Added these functions to support NFD:
 - Set the light source to NFD. (BRKSW-3295)
 - Set parameters for NFD. (BRKSW-3340, BRKSW-3341)
 - Show the correct information on the Y-axis in the Capillary View workspace. (BRKSW-3342)
 - Replace the light source for NFD. (BRKSW-3693)

Introduction

- Added a function that changes the cursor to show when the software is busy. When the task is completed, the cursor changes back. (BRKSW-3123)

BioPhase Software

- Added functions to support NFD:
 - During method creation, set the detector to use NFD, set the applicable parameters, and disable parameters for the other detectors. (BRKSW-3296)
 - During sequence creation, after methods are added, software validation makes sure that the parameters for all of the selected methods in the sequence are compatible. (BRKSW-3339)
 - During method or sequence creation, added another option for **PMT Gain** to use with the BioPhase Capillary Isoelectric Focusing (cIEF) kit. (BRKSW-3839)

BioPhase Analysis Software

- Added functions to analyze data acquired with NFD and create reports that show the correct information. (BRKSW-3300)

Corrected Issues in Version 1.5

BioPhase Software

- During BioPhase software installation, on the selection screen for the `Reagent` folder, if the **Back** button is clicked, then after the **Next** button is clicked, software installation stops and the installer closes. (BRKSW-2419)
- If there are a large number of methods in a project, then not all of them can be seen in the Open a Method dialog in the Method Editor. (BRKSW-2459)
- If the / (forward slash) character is part of the **Sample ID**, then a folder is created. The folder name is the text before the /. The characters after the / are used as the file name. (BRKSW-3688)
- For a project with many sequences, the list of sequences that is shown in the Open a Sequence dialog is different than the list that is shown in the Projects/Sequence pane on the Sequence Summary tab in the Sequence Editor. (BRKSW-3700)

BioPhase Analysis Software

- If peak annotations are shown on a graph and that graph is saved as a `png` file or copied, then the peak annotations might not show correctly when the file is opened or pasted. (BRKSW-1905)

- If external markers are selected for **Log**, **Quadratic**, **Cubic**, **Quartic**, or **Point to Point** in the **Fit Type** list, then the markers in the Marker table are used to calculate the calibration curve. (BRKSW-3716)
- On the Overlay tab, if **Switch Trace** was used to change the data shown on the graph, then the label for the Y-axis might not be correct. (BRKSW-3749)
- Calibration curves that have a negative coefficient in the equation will show + – instead of –. (BRKSW-3769)

BioPhase Firmware 1.5

BioPhase firmware 1.5 was released in September 2025.

Changes in this version include:

- Added NFD as an option for the light source or detector. (BRKSW-3296)
- Added functions to control the NFD detector. (BRKSW-3295)
- Added functions to disable functions and parameters for UV detection when NFD is selected as the detector. (BRKSW-3599)
- Updated commands to control the light source to include NFD. (BRKSW-3463)
- Added functions for compatibility with older systems that do not have the hardware components for NFD installed. (BRKSW-3799)

Operating System Requirements

This version of the software is compatible with Microsoft Windows 10, 64-bit. For computer requirements, refer to the section: [Computer Requirements](#).

Computer Requirements

The computer must meet the minimum requirements for Microsoft Windows 10, 64-bit software.

Local Computer Configuration Requirements

In a local computer configuration, customers can purchase a computer from SCIEX or supply their own. If a non-SCIEX computer will be used, then the customer is responsible for all aspects of configuration and installation of the BioPhase software. The non-SCIEX computer must meet or exceed the specifications for the validated computer. Refer to the section: [Validated Computer Configuration](#).

Validated Computer Configuration

Table 2-1 Validated Computer Configuration

Item	Details
Operating system	Microsoft Windows 10 Enterprise LTSC 2019
Other software	OS Windows Media .NET Framework 4.7.2 or later
CPU	Heatsink 5820 Tower
Random access memory (RAM)	32 GB (2 × 16 GB) DDR4 3200 MHz RDIMM ECC memory
Solid state drive	M.2 1 TB PCIe NVMe Class 40
Ethernet adapters	Ethernet port for network connectivity

Network Configuration Requirements

To connect the BioPhase 8800 system to the customer network, a computer (a domain isolator) that is configured to isolate the system from the network domain is required. Software that is required for use with the domain isolator is available from SCIEX.

Before the FSE arrives at the customer site to install the BioPhase 8800 system, customers must configure the domain isolator to connect to their network. We recommend that a local IT representative give assistance to add any computer to the network domain.

To connect to multiple BioPhase 8800 systems, a single domain isolator can use a network switch or be configured as a virtual LAN (VLAN) on the customer network.

Domain Isolator Requirements

Table 2-2 Domain Isolator Requirements

Item	Details
Operating system	Microsoft Windows Enterprise 10 LTSC 2019
Other software	.NET Framework 4.7.2 or later
Adapters	Two network interface cards

Compatible Software and Firmware

To make sure that the performance and compatibility of the BioPhase 8800 system are correct, use the most recent versions of software and firmware.

The latest version of software and release notes are available for download at sciex.com/software-downloads. Follow the installation instructions in the release notes. If issues with the installation occur, then contact sciex.com/request-support.

For the domain isolator or computer, the most recent versions are:

- Project Management software: 1.5
- BioPhase software: 1.5

For the BioPhase 8800 system, the most recent versions are:

- Front panel: 1.5
- Firmware: 1.5

Note: The front panel and firmware must be installed by a SCIEX field service employee. If the most recent version of the front panel or firmware is not in use, then contact SCIEX Technical Support at sciex.com/request-support.

Additional Software

To use the import or export functions in the Sequence Editor workspace, Microsoft Excel must be installed on the local computer.

Installation Instructions

3

Note: To download the software, internet access is required. To decrease the time required for the installation, we recommend that all of the required software and materials be downloaded before the scheduled installation.

Download Required Software and Files

Go to sciex.com/software-downloads, and then download these files from the **More Software Downloads** section:

- BioPhase Software 1.5
- BioPhase Project Management Software 1.5
- BioPhase Project Files 1.5

Tip! To prevent possible installation issues, save the files to a location other than the computer desktop. Before the installation is started, disconnect all external USB storage devices.

Create Project Folders

Use this procedure to create project folders that contain methods, sequences, reagents, and analysis parameters to be used with the BioPhase software.

Note: If a previous version of the software is installed, then this procedure is not required. The saved folders can be used.

1. In File Explorer, right-click the `BioPhase-Project-Files-1.5-Rev-A` file, and then click **Extract All** to extract the installation package.
The Extract Compressed (Zipped) Folders dialog opens.
2. Click **Browse**, and then select a folder on a local or network drive, for example:
`C:\BioPhase-Project-Files`.
3. Click **Select Folder**, and then click **Extract**.
The extracted files are copied to the selected location. The extracted files include these folders:
 - Project
 - Reagent
 - Data Analysis

Installation Instructions

- Report

The `Project` and `Reagent` folders are used during installation.

Install the BioPhase Software

The BioPhase software lets the user set up methods and sequences for data acquisition, and then analyze the collected data.

1. Go to sciex.com/software-downloads, and then download the latest version of the BioPhase software.
2. Log on to the computer as a Windows user with Administrator privileges.
3. Make sure that all of the applications are closed.
4. If a previous version of the software is installed, then do this:

- a. Copy or move the license file (`License.lic`) from `C:\Program Files (x86)\AB SCIEX\BioPhase` to a different location.

The license file is required when the new version is installed. The uninstall process deletes the license file, so make sure that there is a copy in a different location from the software.

- b. Uninstall the BioPhase software.

5. In File Explorer, right-click the `BioPhase-Editor-Software-1.5.zip` file, and then click **Extract All** to extract the installation package.
6. In the installation package, double-click the installer `msi` file.
7. Select the **I accept the terms in the Licence Agreement** check box, and then click **Install**.
8. Follow the on-screen instructions.

When the location of the `Project` and `Reagents` folders is required by the installer, do one of these steps:

- For a new installation, use the location of the folders that were created when the project folders were set up. Refer to the section: [Create Project Folders](#).
- If a previous version of the software was installed, then use the location of the saved folders.

Note: If the `Project` and `Reagents` folders are on a shared drive, then use the full path to the folder. If the folders are on a mapped drive and the mapped drive name is used, then issues with access to the projects or reagents might occur.

9. After the software is installed, start the computer again.
10. Configure the license:

- For a new installation, download, and then activate the license. Refer to the section: [Electronic Licensing](#).
- If a previous version of the software was installed, then copy the license file that was saved in step 4.a to C:\Program Files (x86)\AB SCIEX\BioPhase.

Electronic Licensing

To use the BioPhase software, a node-locked license is required. The license file name is `License.lic`. The license file is installed in the C:\Program Files (x86)\AB SCIEX\BioPhase folder on the computer where the BioPhase software is installed. To activate the node-locked license, refer to the section: [Activate a Node-Locked License](#).

Note: For node-locked licenses, do not change the computer date and time after the license is activated. If the date and time are changed after the license is activated, then the software might not operate correctly.

Note: Do not change a node-locked license file. Changes to the license file make the license invalid. The license cannot be recovered.

Note: To purchase more licenses, contact SCIEX Support at sciex.com/contact-us.

Activate a Node-Locked License

Prerequisites
<ul style="list-style-type: none">• A license key is available.

1. On the desktop, double-click the BioPhase icon.

Figure 3-1 Activation Dialog

BioPhase Activation

For server-based license activation,
close this window and contact the IT department.

To start a node-locked license activation,
obtain and install a license file by doing the following:

A license file is required to activate, close this window and contact the IT department.
Note: Optionally, a demo license key can be used. It unlocks the software for a limited period.

1. Enter the license key from the license certificate or packaging here:

2. Record the following computer ID:

168F79E4C3 54B3FF92E8 54B3FF92E879E4C3 54B3FF92E8 54B3FF92E8

Copy ID to Clipboard

3. Click the following link and follow the instructions: <https://sciex.com/request-support>
After the required information is submitted, SCIEX sends the license file by email.

4. Save the license file from the email message to the Desktop.

5. Click the following button below to install the license file.

Install License File...

For assistance, click [FAQs](#)

Close

2. In step 1 of the Activation dialog, type the license key.
The license key might be supplied on a printed activation certificate or in an e-mail from SCIEX Now. If the license key is missing, then contact a SCIEX sales representative.

Note: The license key starts with AID and is followed by 32 characters: 8 segments of 4-digit codes divided by hyphens.

When the license key is supplied, the **Copy ID to Clipboard** and **Install License File** buttons and the link in step 3 of the Activation dialog become available.

-
-
3. In the Activation dialog, click the link in step 3.
The SCIEX Login web page opens.
4. To log on to a SCIEX account, click **Log In** or **Create an Account**.

When account creation or logon is complete, the SCIEX software activation web page opens. The first name, last name, and e-mail address of the user are shown in the first three fields.

If a license will be activated for the BioPhase software on this computer, then the **License Key** field shows the correct information.

5. If a license will be activated for the BioPhase software on a different computer, then type the computer ID and license key.

The computer ID is the MAC address of the network port that is used to connect the computer to the network.

6. If the **Computer ID** field is empty, then do this:
 - a. In the Activation dialog, click **Copy ID to Clipboard**.
 - b. In the SCIEX software activation web page, paste the ID in the **Computer ID** field.
7. (Optional) In the **Nickname** field, type a name.
8. In the **Select Your Instrument** field, select an instrument from the list.
9. In the **Serial Number** field, type the serial number of the BioPhase 8800 system.
The serial number is on the back panel.
10. Click **Submit**.
11. To download and save the license file, do one of these steps:
 - In the message dialog, click **Download Now**, and then save the file to a local file path.
 - In the e-mail, download the license file, and then save the file to a local file path.
12. In the Activation dialog, click **Install License File**, and then select the location to save the license file.
If the license file is valid, then the Activation dialog closes and the BioPhase software opens to show the Home page.

Install the Project Management Software

CAUTION: Potential Data Loss. Make sure that the domain isolator is set to never go to sleep. If the domain isolator goes to sleep, then data files might not be saved during acquisition. SCIEX computer images already have these settings set correctly.

Note: Make sure that the software version of the Project Management software and the BioPhase software is the same.

Note: The BioPhase Log File Extractor software is installed during the installation of the Project Management software.

Installation Instructions

In a local computer configuration, the software is installed on the local computer.

In a network configuration, the software is installed on the domain isolator.

1. Log on to the computer as a Windows user with Administrator privileges.
2. Make sure that all of the applications are closed.
3. If a previous version of the software is installed, then make a backup copy of all of the project files, and then uninstall the software.
4. In File Explorer, right-click the `BioPhase-Project-Files-1.5-Rev-A` file, and then click **Extract All** to extract the installation package.
5. Double-click the installer `msi` file.
6. Follow the on-screen instructions.

Tip! To prevent possible installation issues, save the file to a location other than the computer desktop. Before the installation is started, disconnect all external USB storage devices.

7. After the software is installed, start the computer again.

Configure the System

4

This section includes the required configuration procedures to use the BioPhase 8800 system.

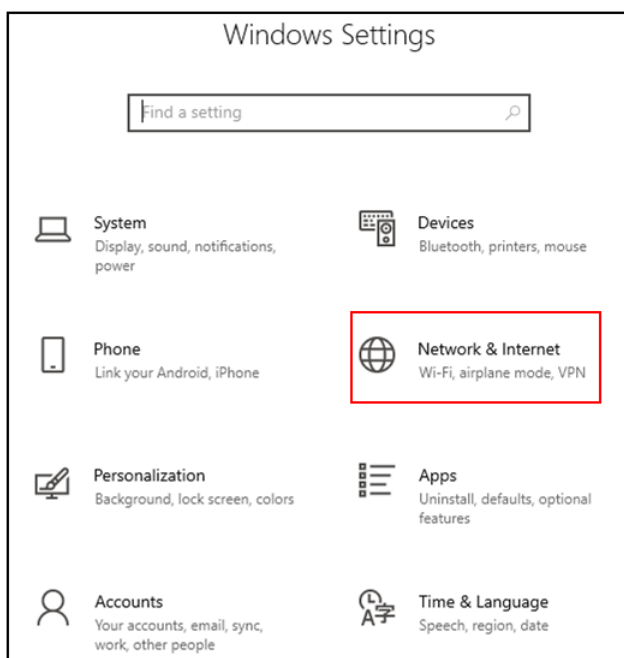
Configure the Domain Isolator

A domain isolator is required to connect the BioPhase 8800 system to the project files. The domain isolator can be installed in a local or network configuration.

Configure the IP Address

1. In Windows, open Settings, and then click **Network & Internet**.

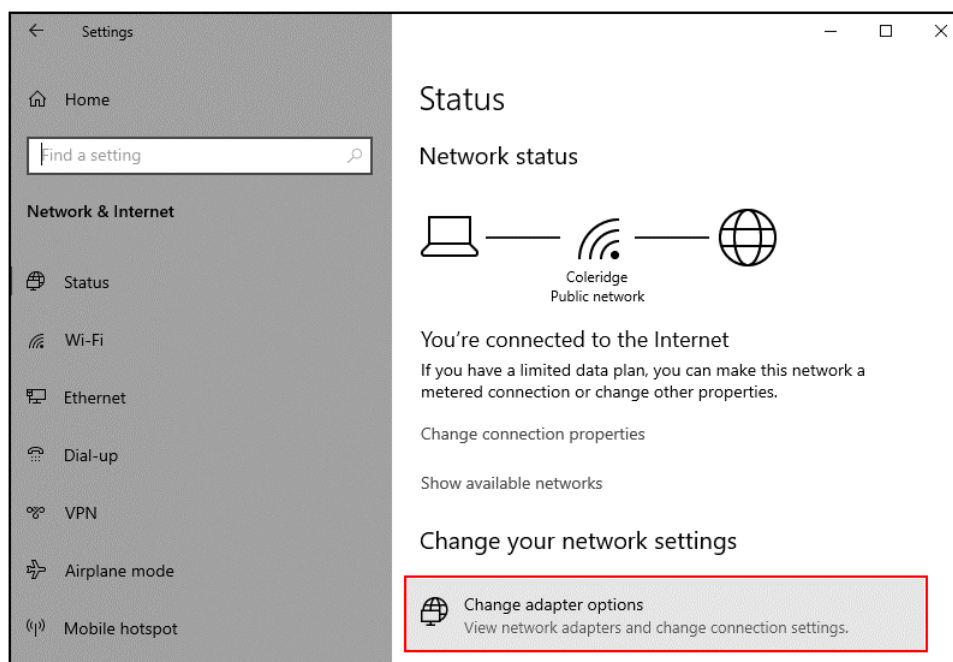
Figure 4-1 Windows Settings



2. Click **Change adapter options**, and then select the adapter that is used to connect to the system.

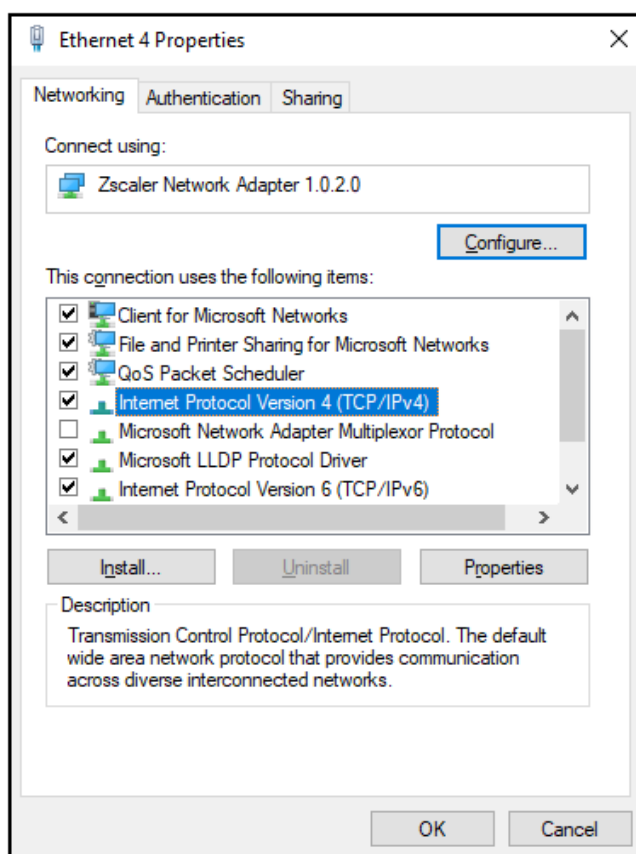
Configure the System

Figure 4-2 Change the Network Settings



3. On the Networking tab, click **Internet Protocol Version 4 (TCP/IPv4)**, and then click **Properties**.

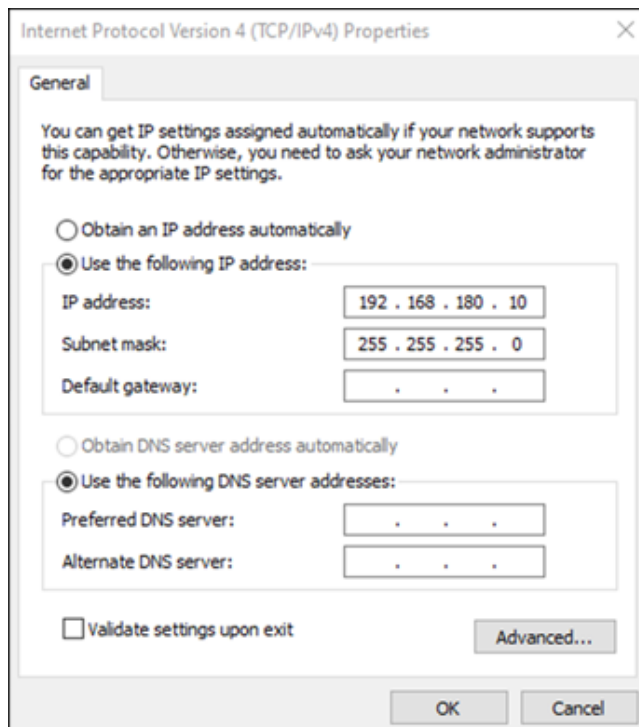
Figure 4-3 Networking Tab



4. Click **Use the following IP address**.

Configure the System

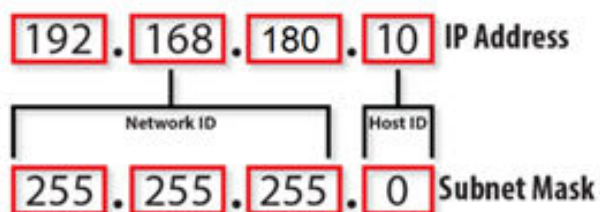
Figure 4-4 IP Address



5. Type an IP address that is different than that of the system, but in the same subnet mask as that of the system.

To see the IP address of the system, refer to the section: [Configure the BioPhase 8800 System IP Address](#).

Figure 4-5 New IP Address



Note: The default network ID used for all systems is 192.168.180.*n*, where *n* is not equal to 10. Set the host ID to 10, since no system uses that same host ID.

6. Click **OK**.

Configure the Power Options

1. In Windows, open Control Panel, and then click **Power Options**.

2. Click **Ultimate Performance**, and then click **Change plan settings**.
3. In the Power Options dialog, set these values:

Label	Parameter and Setting
Hard disk	Turn off hard disk after: Never
Sleep	<ul style="list-style-type: none"> • Sleep after: Never • Allow hybrid sleep: On • Hibernate after: Never • Allow wake timers: Enable
Power buttons and lids	<ul style="list-style-type: none"> • Power button action: Do nothing • Sleep button action: Sleep

Configure the BioPhase 8800 System IP Address

Note: If the information for the network configuration is incorrect, then users will not be able to log on to the system.

1. Log on to the system as a Windows user with Administrator privileges
2. On the Front Panel, touch **Configuration**, and then touch **Network**.
3. Touch to type the **Project Management IP Address**, and then touch **Save**.
This is the IP address of the computer where the Project Management software is installed.
4. Touch to type the **BioPhase 8800 IP Address**, and then touch **Save**.
This is the IP address of the BioPhase 8800 system. Make sure that **Enable Third-Party Control** is not selected.

Configure the Project Management Software

The Project Management software can have a local or network configuration.

For a local configuration, refer to the section: [Local Configuration: Create a User](#).

For a network configuration, refer to the section: [Network Configuration: Connect to the Active Directory Domain](#).

Configure the System

Figure 4-6 Local Configuration: One System

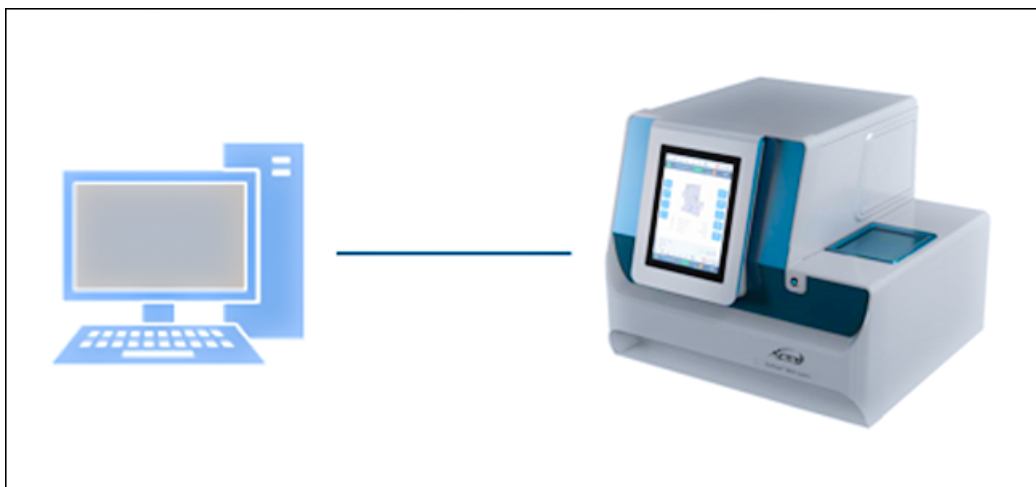


Figure 4-7 Local Configuration: Multiple Systems

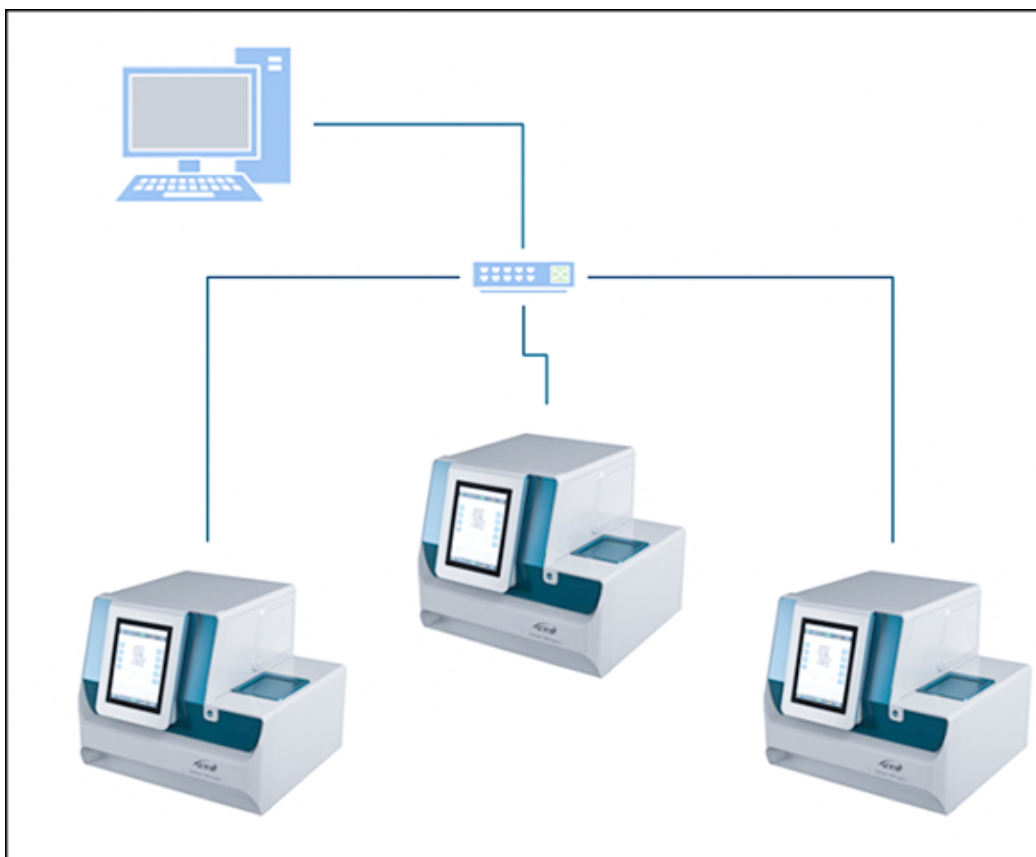
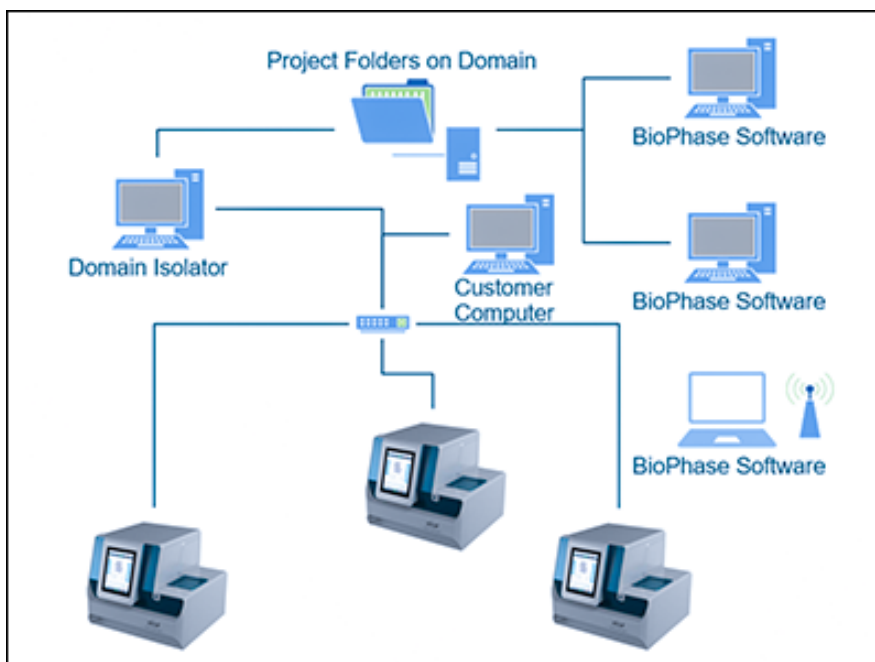


Figure 4-8 Network Configuration




The BioPhase 8800 system can be configured to operate on an Active Directory (AD) domain. To log on to the system, users can use their credentials for that AD domain.

Local Configuration: Create a User

1. On the computer where the domain isolator is installed, in the Windows search bar, type `run`, and then click **Run**.
2. In the **Open** field, type `lusrmgr.msc`, and then click **OK**.
3. In the left pane, right-click **Users**, and then click **New User**.

Configure the System

Figure 4-9 New User Dialog



New User

User name: Biophase

Full name: Solex FSE

Description:

Password:

Confirm password:

☐ User must change password at next logon

☐ User cannot change password

☒ Password never expires

☐ Account is disabled

Help Create Close

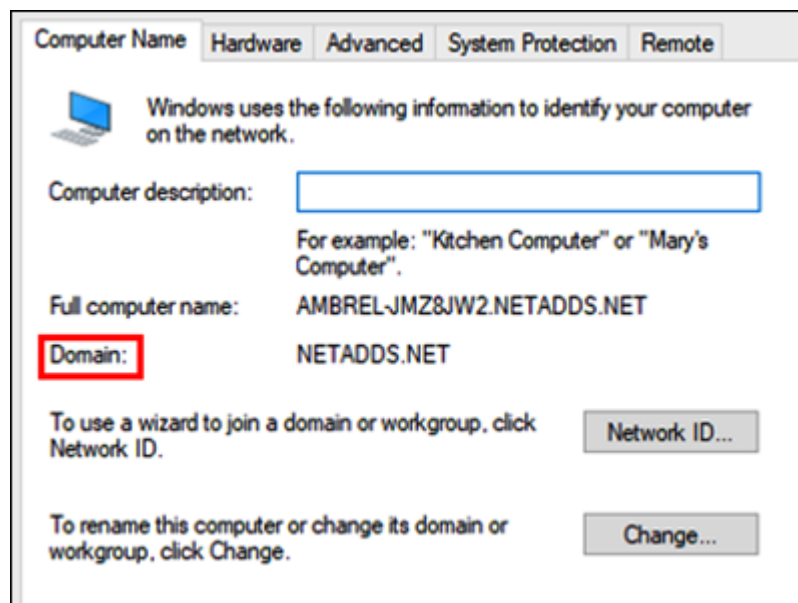
4. In the **User name** field, type the name.
5. In the **Password** and **Confirm password** fields, type the password.
6. Click **Create**.

Network Configuration: Connect to the Active Directory Domain

1. To make sure that the computer is connected to the network, do this:
 - a. In the Windows search bar, type `advanced system settings`, and then click **Advanced system settings**.
 - b. Open the Computer Name tab.
 - c. Make sure that **Domain** is shown.

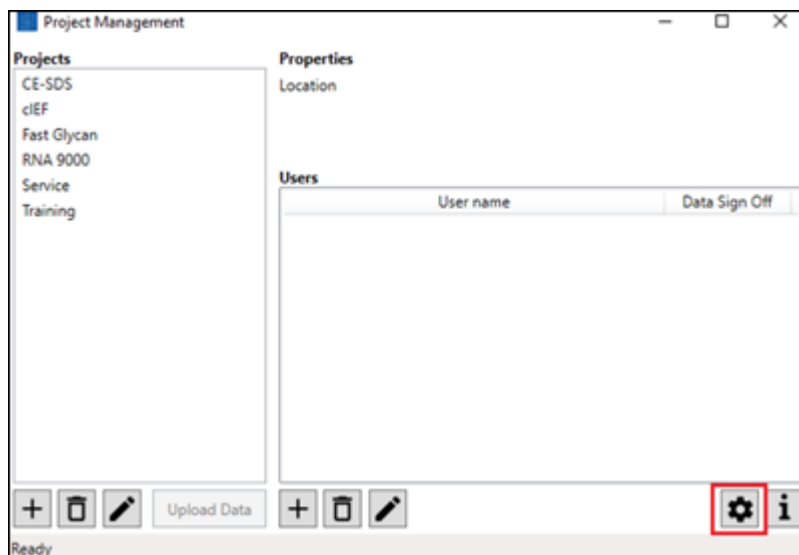
Note: If the computer is not connected to the network, then **Workgroup** is shown.

Figure 4-10 Advanced System Settings



2. Open the Project Management software, and then click the **Configuration** icon.

Figure 4-11 Configuration Icon



3. Click **Use AD Domain**, and then click **OK**.

Note: If a subdomain is used, then select the **Override Default Name** check box.

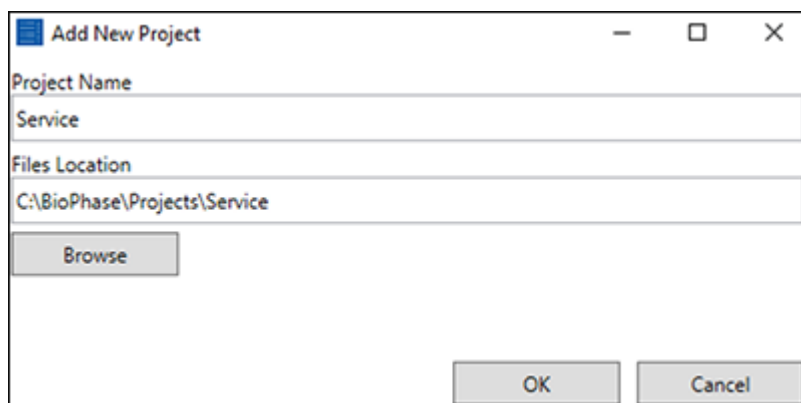
4. Close the Project Management software, and then start the computer again.

Import the BioPhase 8800 System Project Files

1. (Optional) Go to sciex.com/software-downloads, and then download the latest project files. If the project files were downloaded and extracted during the software installation procedures, then this step is not required.
A correct download includes these folders: Projects, Reagents, Data Analysis, and Reports.
2. Copy the project files, and then paste them in the C:/BioPhase folder.
3. Open the Project Management software.

4. Below the Projects pane, click  .

Figure 4-12 Add New Project Dialog




5. In the **Project Name** field, type a name for the new project.
6. Click **Browse**, and then find and click the folder for the new project.
7. Click **OK**.
8. To add the project files for related applications, such as CE-SDS, cIEF, fast glycan, or RNA 9000, do step 4 to step 7 again.

Configure User Access to the Project Files

Do this procedure to make the project files available in the Front Panel software on the BioPhase 8800 system.

1. Open the Project Management software.
2. In the Projects pane, click the applicable project.

3. Below the Users pane, click  .
In a network configuration, the domain name is shown in the **AD Domain** field. In a local configuration, the **AD Domain** field stays empty.
4. In the **Enter the user name** field, do this:
 - Local configuration: Type `biophase`.
 - Network configuration: Type the Windows user name. Do not type `@xxxxxxx.com`.
5. Click **Check Name**.
The **Enter the user name** field is filled with the correct value.
6. Click **OK**.

Known Issues in the Software

5

Note: The numbers in parentheses are reference numbers for each issue or feature in the SCIEX internal tracking system.

Issue	Notes
BioPhase software: If the software is configured to save methods and sequences to a server, then methods and sequences cannot be created and saved if the computer with the BioPhase software is not connected to the server. (BRKSW-1790)	The computer with the BioPhase software must be connected to the server. During installation, the user identifies where the sequences will be saved. If the computer is directly connected to the BioPhase 8800 system, then there is no issue.
BioPhase Analysis software: In the System Suitability Settings dialog, values for RMS Noise , Peak-to-Peak Noise , and Drift cannot be deleted. (BRKSW-2254)	Double-click in the cell to edit or delete the RMS Noise , Peak-to-Peak Noise , and Drift values, or close the System Suitability Settings tab, and then open it again.
BioPhase Project Management software: During creation of a new project, if the project name contains special characters, then errors will occur that prevent the use of that project in the BioPhase or Front Panel software. (BRKSW-3164)	Do not use these special characters in project names: < (less than), > (greater than), : (colon), " (double quote), \ (backward slash), (vertical bar), ? (question mark), or * (asterisk).
BioPhase Analysis software: If there are issues with network connectivity during sequence creation, then the SAVE button is not disabled after the sequence is saved. (BRKSW-3273)	N/A
BioPhase Analysis software: In the Report Setup dialog, if Include logo is selected but Width (%page) is empty, then the logo is not shown in the report. (BRKSW-3377)	If Include logo is selected, then make sure that Width (%page) is not empty.
BioPhase Analysis software: In the Report Setup dialog, if Include logo is selected but Above header is not, then the logo overwrites the header in the report. (BRKSW-3379)	If Include logo is selected, then make sure that Above header is also selected.

Issue	Notes
BioPhase Analysis software: If the analysis is only a baseline evaluation, then the legend in the system suitability report is not shown. (BRKSW-3423)	N/A
BioPhase Analysis software: In the System Suitability Setup dialog, if the Criteria cell in the Peak Evaluation table is empty, then the results are unpredictable. (BRKSW-3424)	For any row in the Peak Evaluation table, make sure that the Criteria cell is not empty.
BioPhase Analysis software: On the Overlay tab, the Analyze (all) and Analyze (checked) buttons do not function correctly. (BRKSW-3450)	Do data analysis on the Single tab.
Front Panel software: If an error recovery method is in progress, then the status of the method is not shown. The front panel shows that the system is in an error state. (BRKSW-3516)	N/A
BioPhase software: When there are a large number of actions in a method, an empty page in the Method Actions section of the method report is added. (BRKSW-3589)	No information is added to or removed from the report.
BioPhase Log File Extractor software: If the location for the exported log file is at the root, such as C:\, then the software shows an error message that the software cannot communicate with the system. (BRKSW-3593)	Export log files to a folder, not the root.
BioPhase software: When a sequence is created, if too many runs have been added, then an error message is shown. After the error is cleared, the values in the Sample ID , Run Type , and Data File cells change to their default values. (BRKSW-3606)	If an error occurs while a sequence is created, then close the sequence editor, and then open it again. Examine the values in the Sample ID , Run Type , and Data File cells. If required, then make any changes to the values.

Known Issues in the Software

Issue	Notes
BioPhase Analysis software: If the user does not have sign-off authorization, then the signature function is slow and an error message shows for the last signature that was not added correctly. If there are more signatures that are not added correctly, then the message shows only for the last signature. (BRKSW-3649)	In the Project Management software, make sure that users who are required to sign are set up with sign-off authorization.
BioPhase software: Only sequences in the top-level folder for a project can be seen in the BioPhase software. All of the sequences in a project are shown on the front panel. (BRKSW-3667)	Do not save sequences in a project subfolder. If there are sequences in a subfolder, then move the sequences to the top-level folder or create a new project, and then move the sequences to that project.
BioPhase software: Incorrect sequence names are sometimes shown in the Sequence Editor. (BRKSW-3674)	Do not change the name of the sequences in File Explorer.
BioPhase Project Management software: When Upload Data is clicked and there is no data to upload or the upload fails, the information given in the message that is shown is incorrect. (BRKSW-3710)	Use the upload function only when there is data in the C:\BioPhase\Archive folder on the domain isolator.
BioPhase Project Management software: If the user name for the local PC is the same as the user name for the network, then an error might occur when signatures are added. (BRKSW-3979)	Make sure that these user names are not the same.
BioPhase software: If Microsoft Excel is not available, then the export function cannot be used and an error message might show. (BRKSW-4042)	Microsoft Excel is required to use the export and import functions.
BioPhase software: During creation of a new method, if  (Undo) is clicked before an action is added, then the software might add a recently-deleted action that is from a previously closed method to the new method. This issue can also cause the software to close unexpectedly. (BRKSW-4285)	Delete the unwanted action or close the software, and then start it again. Do not click  (Undo) before actions are added to the method.

Issue	Notes
BioPhase Analysis software: When a large number of files (more than 100) are processed simultaneously, then some files might not have the signature added correctly or might show the incorrect watermark. This issue can occur when there are network connectivity issues with the domain isolator. (BRKSW-4438)	Examine processed files to make sure that the signature and watermark are correct.
For some users of the BioPhase software: When acquisition is complete, the data is not saved to the correct location until after the system is turned off. (BRKSW-4480)	The current user must have read/write permissions for the selected location.
BioPhase software: If the current user has read-only permissions for the location that contains saved files, then the user will not be able to see the sequences. (BRKSW-4540)	Give the user full permissions.
BioPhase Analysis software: If an overlay graph with stacked traces is created with files that have different ranges on the Y-axis, then on the overlay graph, a space might be seen on the left side of 0. (BRKSW-4552)	N/A
Microsoft Windows does not let the length of file names, which includes the full file path, be more than 260 characters. If the full file name is more than 260 characters, then data loss might occur. (BRKSW-4562, BRKSW-4563)	To prevent this issue, keep names as short as possible.
BioPhase Analysis software: In the Sequence Editor window, if the sort function is used on the Data File column, then errors in this column might not be identified and cell values might not be editable. (BRKSW-4630)	Do not use the sort function on the Data File column. For all of the other columns, use the sort function only after all of the other changes are done.
BioPhase Analysis software: If values are supplied for the Y-axis in the Custom Scaling dialog, then these values are not shown correctly when the dialog is opened again. (BRKSW-4662)	N/A

Known Issues in the Software

Issue	Notes
BioPhase software: If a sequence with a separation step that is less than 1 minute is run two times without a pause, then the second run might stop unexpectedly. For this issue to occur, the total number of combined acquisitions in the two runs must be more than 40. (BRKSW-4670)	Before the second sequence is started, turn the system power off, and then turn it on again.
Front Panel software: If Sample Storage Temperature and Capillary Cartridge Temperature are adjusted simultaneously from the Set Temperature window, then when Accept is touched, only the temperature for Sample Storage Temperature is adjusted. (BRKSW-4939)	Adjust the temperature for Sample Storage Temperature and Capillary Cartridge Temperature individually.
BioPhase software: For some scenarios during the creation or modification of a sequence, the UNDO button might not operate correctly when it is clicked. (BRKSW-4978)	Make the required changes manually.
BioPhase software: In the Sequence Editor window, if there is a : (colon) in the fields for Sample ID or Data File , then the software cannot save the data file during acquisition and the data will be lost. (BRKSW-5021)	Do not use these special characters in the Sample ID or Data File fields: < (less than), > (greater than), : (colon), " (double quote), \ (backward slash), (vertical bar), ? (question mark), or * (asterisk).

Contact Us

Addresses

EC Authorized Person

AB Sciex Netherlands B.V.
1e Tochtweg 11,
2913LN Nieuwerkerk aan den IJssel
Netherlands



Made in Singapore

AB Sciex Pte. Ltd.
Blk33, #04-06 Marsiling Industrial Estate Road 3
Woodlands Central Industrial Estate, Singapore 739256

SCIEX Headquarters

AB Sciex LLC
250 Forest Street
Marlborough, MA 01752
USA

Customer Training

- Global: sciex.com/contact-us

Online Learning Center

- [SCIEX Now Learning Hub](#)

Buy Supplies and Reagents

Buy SCIEX supplies and reagents online at store.sciex.com. To make an order, use the account number on the quote, order confirmation, or shipping documents. Customers in the United States, Canada, United Kingdom, Belgium, Netherlands, France, Germany, and Switzerland have access to the online store. Access will be given to different countries in the future. For customers in different countries, contact a local SCIEX representative.

SCIEX Support

SCIEX and its representatives have a global staff of fully-trained service and technical specialists. They can supply answers to questions about the system or any technical issues

Contact Us

that might occur. For more information, go to the SCIEX website at sciex.com or use one of the following links to contact us.

- sciex.com/contact-us
- sciex.com/request-support

Cybersecurity

For the latest guidance on cybersecurity for SCIEX products, visit sciex.com/productsecurity.

Documentation

This version of the document supersedes all of the previous versions of this document.

To find software product documentation, refer to the release notes or software installation guide that comes with the software.

To find hardware product documentation, refer to the documentation that comes with the system or component.

The latest versions of the documentation are available on the SCIEX website, at sciex.com/customer-documents.

Note: To request a free, printed version of this document, contact sciex.com/contact-us.
