
Introduction

The software supports the following:

- Data from the Analyst[®] Software version 1.4 and later.
- Data from nominal mass systems.

For information on how to renew the software licenses, refer to the *Keystone Converter Software Installation Guide*.

Keystone Viewer Software Features

The Keystone Viewer Software lets users view AnIML file information, including sample chromatograms and peak integrations, Results Tables, sample metadata and all audit trails.

Keystone Converter Software Features

The Keystone Converter Software lets users convert data to an ANiML file, which is a non-proprietary, human-readable, data format that can be viewed in any text editor.

Data can be archived, viewed, or imported by a laboratory information management system (LIMS) or an electronic lab notebook (ELN).

The following data elements are converted:

- wiff files
 - Spectra
 - Chromatograms
 - Acquisition method
- rdb files
 - Integrated chromatograms
 - Quantitation method
 - Quantitation audit trail

- atd or ata files
 - Project Audit Trail (current and archived)
 - Instrument Audit Trail (current and archived)
- All nominal mass scan types available in the Analyst[®] Software version 1.4 or later are supported.
- Digital signatures are supported for increased data integrity
- Two modes are available for file conversion:
 - Windows user interface for interactive one-at-a-time data conversion
 - Command line for batch data conversion

Known Issues and Limitations

Known Issues

Note: The numbers in parentheses are reference numbers for each issue or feature in the SCIEX internal tracking system.

- If wiff files are converted using the Keystone Converter Software, then two audit records are created in the Analyst[®] Software Project Audit Trail for every sample converted. If a large number of samples are being converted, then this behaviour might be undesirable. To avoid capturing these audit records, the Project Audit Map can be modified. To do this, in the active Project Audit Map, clear the **Audited** checkbox for the **Closed Module** and the **Data File has been opened** fields.
- If batch mode is used to convert wiff files that contain IDA experiments with full survey scans or large panels containing more than 500 compounds, then an out of memory issue might occur, preventing conversion of the files. To avoid this issue, convert these files using the Keystone Converter Software and close any open software applications
- If batch mode is used to convert files that also contain rdb files, then occasionally the rdb files might fail to convert. If this issue occurs, then remove the rdb files from the batch and convert them using the Keystone Converter Software.

Update Appearance Options on the IDA Explorer Tab

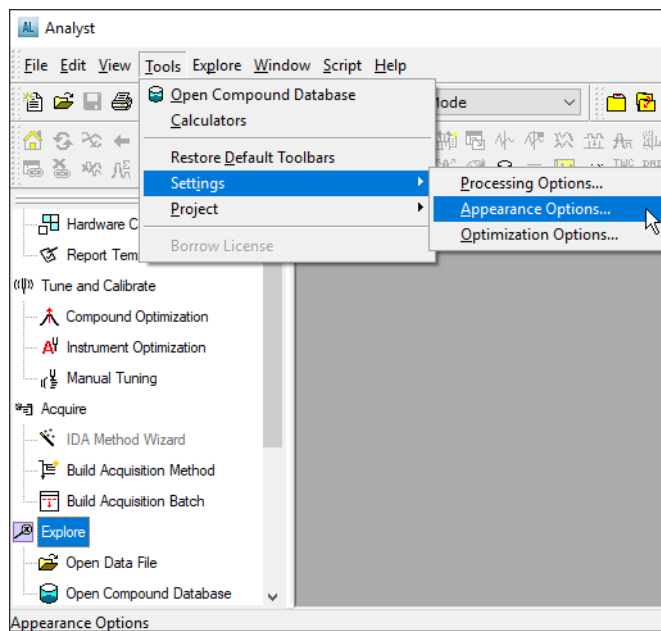
This procedure applies to the Analyst[®] 1.7.2 Software.

To make sure that data is converted and shown correctly in the Keystone Viewer Software, before converting IDA data, update the IDA Explorer tab in the Appearance Options dialog.

1. Open the Analyst[®] 1.7.2 Software.

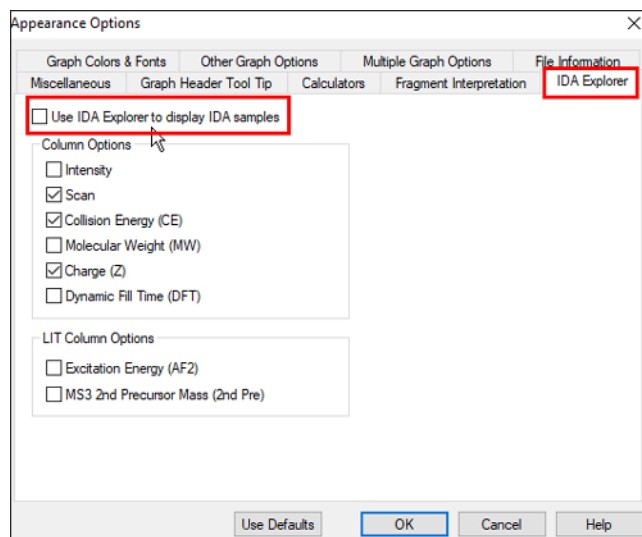
2. On the Navigation bar, click **Explore**.
3. From the menu, select **Tools > Settings > Appearance Options**.

Figure 1 Menu Bar



4. Click the **IDA Explorer** tab and then clear the **Use IDA Explorer to display IDA samples** check box.

Figure 2 IDA Explorer Tab



Limitations

- Data generated using the SCIEX OS Software, the Analyst[®] TF Software, and the MultiQuant[™] Software are currently not supported.
- The Windows 7, 32-bit operating system is not supported.
- ADC and UV data conversions are not supported
- The example data files located in the <drive>:\Analyst Data\Projects\Example\Data\Triple Quad folder might not convert because the files are in format that is older than the 1.4 WIFF file format.
- The Keystone Converter Software and the Analyst[®] Software must be run in the same mode: user mode or administrator mode. We recommend that both be run in user mode.

Contact Us

Customer Training

- In North America: NA.CustomerTraining@sciex.com
- In Europe: Europe.CustomerTraining@sciex.com
- Outside the EU and North America, visit sciex.com/education for contact information.

Online Learning Center

- [SCIEX University™](#)

SCIEX Support

SCIEX and its representatives maintain a staff of fully-trained service and technical specialists located throughout the world. They can answer questions about the system or any technical issues that might arise. For more information, visit the SCIEX website at sciex.com or contact us in one of the following ways:

- sciex.com/contact-us
- sciex.com/request-support

CyberSecurity

For the latest guidance on cybersecurity for SCIEX products, visit sciex.com/productsecurity.

Documentation

This version of the document supercedes all previous versions of this document.

To view this document electronically, Adobe Acrobat Reader is required. To download the latest version, go to <https://get.adobe.com/reader>.

The latest versions of the documentation are available on the SCIEX website, at sciex.com/customer-documents.

Note: To request a free, printed version of this document, contact sciex.com/contact-us.

Keystone Software Release Notes

This document is provided to customers who have purchased SCIEX equipment to use in the operation of such SCIEX equipment. This document is copyright protected and any reproduction of this document or any part of this document is strictly prohibited, except as SCIEX may authorize in writing.

Software that may be described in this document is furnished under a license agreement. It is against the law to copy, modify, or distribute the software on any medium, except as specifically allowed in the license agreement. Furthermore, the license agreement may prohibit the software from being disassembled, reverse engineered, or decompiled for any purpose. Warranties are as stated therein.

Portions of this document may make reference to other manufacturers and/or their products, which may contain parts whose names are registered as trademarks and/or function as trademarks of their respective owners. Any such use is intended only to designate those manufacturers' products as supplied by SCIEX for incorporation into its equipment and does not imply any right and/or license to use or permit others to use such manufacturers' and/or their product names as trademarks.

SCIEX warranties are limited to those express warranties provided at the time of sale or license of its products and are the sole and exclusive representations, warranties, and obligations of SCIEX. SCIEX makes no other warranty of any kind whatsoever, expressed or implied, including without limitation, warranties of merchantability or fitness for a particular purpose, whether arising from a statute or otherwise in law or from a course of dealing or usage of trade, all of which are expressly disclaimed, and assumes no responsibility or contingent liability, including indirect or consequential damages, for any use by the purchaser or for any adverse circumstances arising therefrom.

(GEN-IDV-09-10816-C)

For Research Use Only. Not for use in Diagnostic Procedures.

Trademarks and/or registered trademarks mentioned herein, including associated logos, are the property of AB Sciex Pte. Ltd., or their respective owners, in the United States and/or certain other countries.

AB SCIEX™ is being used under license.

© 2021 DH Tech. Dev. Pte. Ltd.



AB Sciex Pte. Ltd.
Blk33, #04-06 Marsiling Industrial Estate Road 3
Woodlands Central Industrial Estate, Singapore 739256